



Thames High School
Te Kura Tuarua o Te Kauaeranga

Aotearoa **NEW ZEALAND**

INTERNATIONAL Prospectus



Sharing the unique Coromandel
experience with you





NEW EXPERIENCES IN NEW ZEALAND

International students are drawn to Aotearoa / New Zealand for its stunning natural landscapes, welcoming locals, spacious environment, and top-notch education system. Additionally, New Zealand ranks second, globally, as one of the safest countries thanks to its low crime rate and lack of dangerous wildlife.*

Thames is a small, safe, semi-rural town in New Zealand with a population of about 7,600 people. It is located at the base of the Coromandel Peninsula and is conveniently situated just over an hour's drive from Auckland, the largest urban centre in New Zealand.

Thames is a historical town renowned for its gold-mining heritage, scenic landscapes, and vibrant community spirit. The Coromandel region, with its pristine beaches, lush forests, and outdoor recreational opportunities, offers an unparalleled backdrop for learning and personal growth.

International students will find Thames an ideal place to thrive academically while experiencing the warm Kiwi hospitality and the diverse natural wonders of the Coromandel.

The town boasts:

- Great shops and cafes
- Hospital
- Beautiful beaches
- Bush walks and rivers to swim in
- Horse riding
- Saturday morning markets

Join us at Thames High School / Te Kura Tuarua o Te Kauaeranga for an enriching high school experience that combines academic excellence with unforgettable adventures!

For further information on the town and the region, see the websites
www.thecoromandel.com
www.thamesinfo.co.nz



*According to the Global Peace Index, New Zealand is the second-safest country in the world. This index ranks 163 countries based on factors such as crime rates, political stability, and the likelihood of terrorism. In 2022, New Zealand earned a score of 1.269 out of 5, narrowly missing out on the top honours, with Iceland taking first place. www.prosperoteaching.co.nz





Welcome / Nau Mai, Haere Mai

Thames High School is committed to equity, excellence and diversity that reflects our predominantly bicultural heritage. Students learn from a strong curriculum within outstanding facilities.

Our teachers are dedicated professionals who have a passion for making a positive difference in the lives of our young people and we have clear and consistent expectations based on our shared school values, to provide a safe and supportive environment.

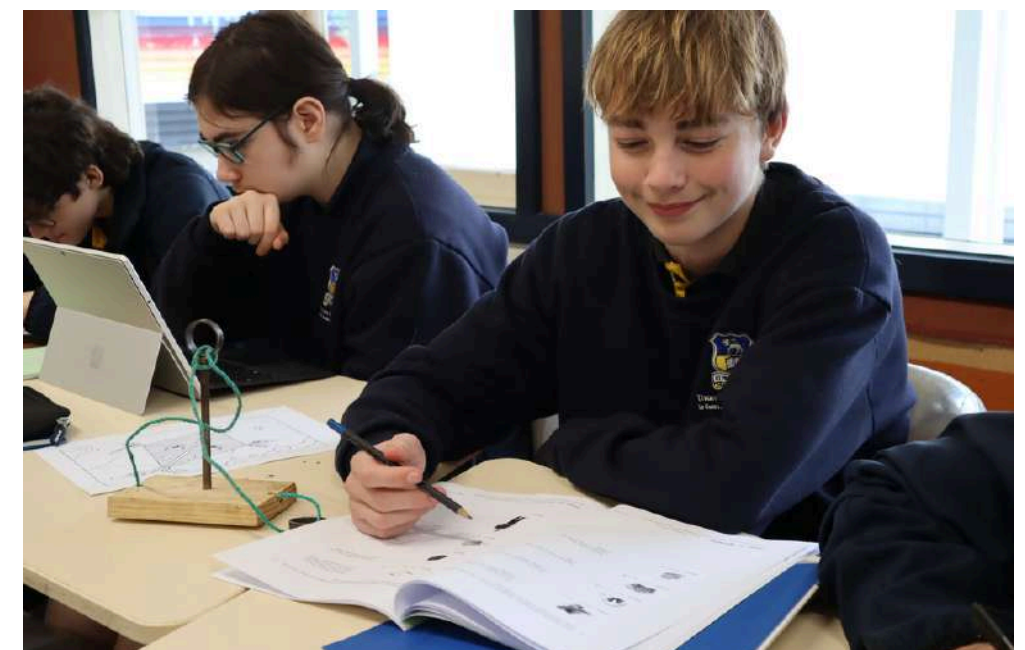
Our vision is:

Kia kōtahi ai te piki ake, kia ikeike rawa ki te taumata
– *We grow together to achieve one's true potential.*

We welcome new international students and invite you to come along and learn more about Thames High School and what we have to offer.

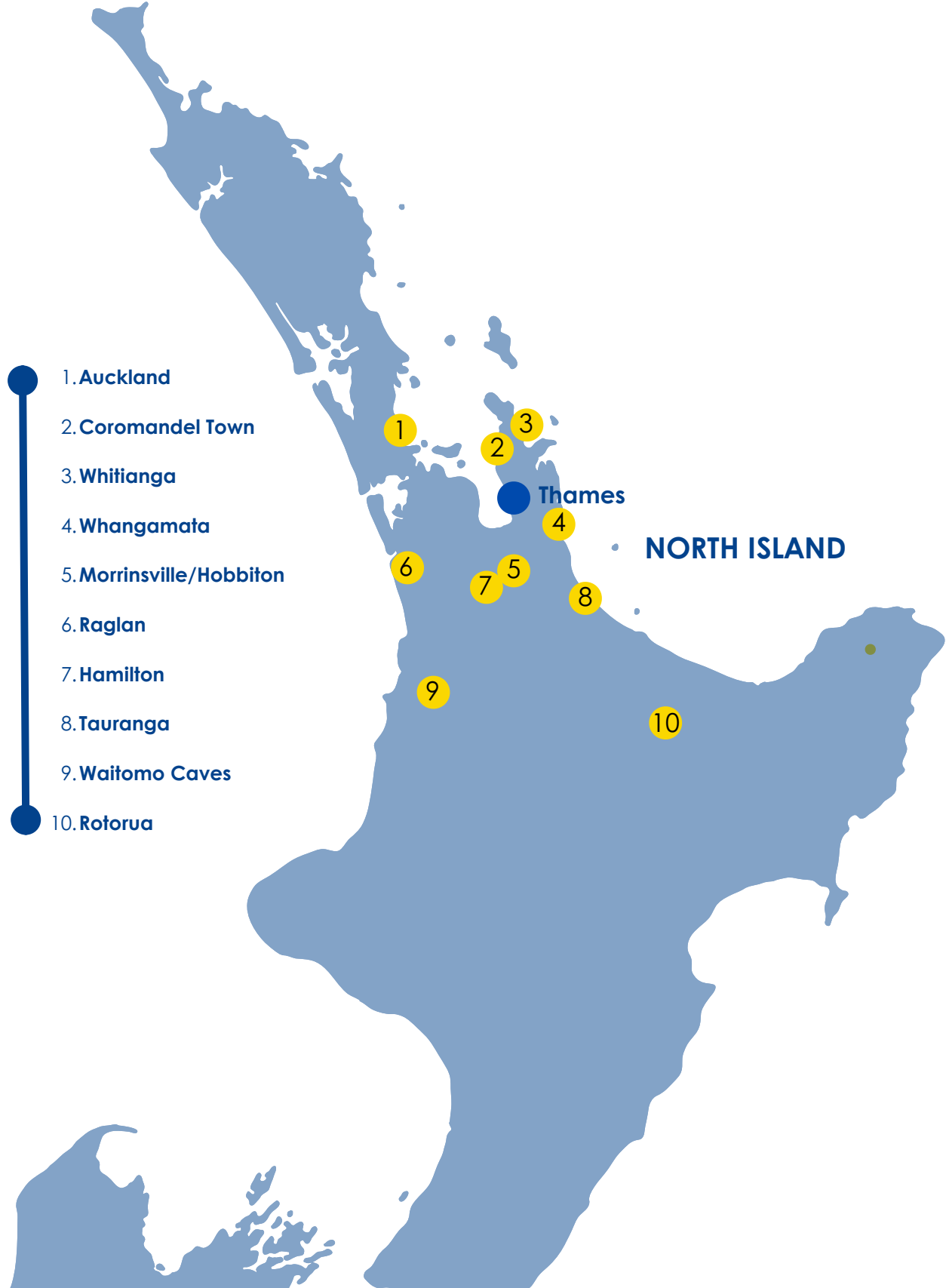


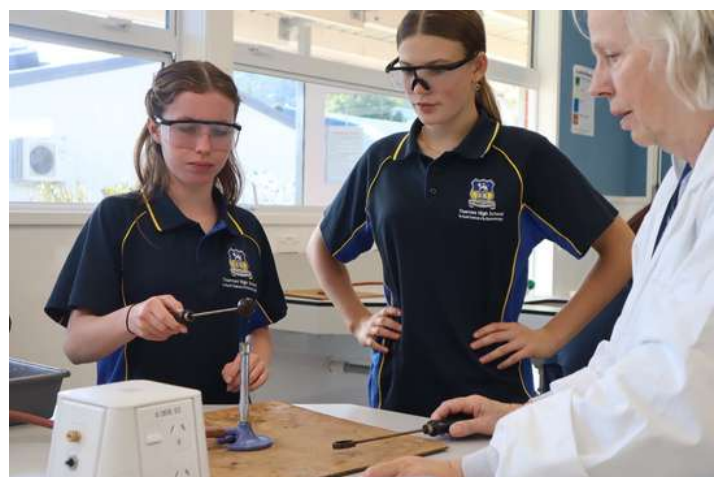
MICHAEL HART
TUMUAKI / PRINCIPAL



KEY LOCATIONS

While Thames is a semi-rural town, it is well-connected to larger urban centres. It is approximately 106 kilometres from Hamilton, 114 kilometres from Auckland, and 128 kilometres from Tauranga.





Learning Style

Thames High School is large enough to offer a broad and balanced curriculum, with multiple pathways, yet small enough to ensure that there is a deep personalised approach to learning and pastoral care and well-being, where everyone is recognised as an individual.

Students are placed in a rōpu (group) in one of our four houses, with a Rōpu Kaitiaki (teacher) who looks after them and is the main point of contact between the school and home. One of the features of Thames High School is that students foster great relationships with their teachers and other students.

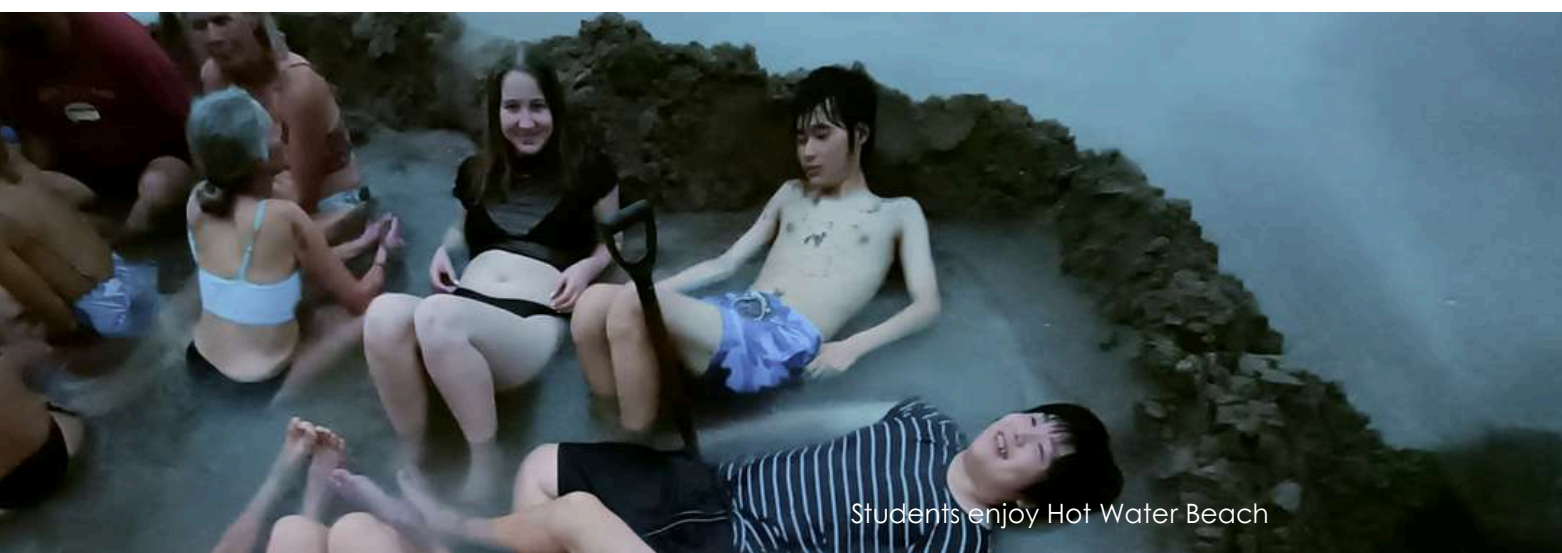
One of our Japanese students Hiroki, who studied at Thames High School for four years, started in Year 10 as a shy boy with poor English skills but he left with many lifelong friends, excellent English and qualifications for a pathway into a Japanese university. We're proud of him and the opportunity to have played a role in his journey.

Pathways into University

Our students study the National Certificate of Educational Achievement (NCEA), an internationally recognised secondary school qualification. NCEA provides students with a comprehensive and flexible education system that aligns with international standards, making it a credible qualification for tertiary education worldwide.

Our top achieving students receive scholarships into Tertiary Education Providers such as our local Waikato University, Auckland University and Otago University.





Students enjoy Hot Water Beach

OUR INTERNATIONAL STUDENTS



International Food Festival

The annual event where international students and Kiwi students come together at Thames High School to plan and prepare delicious food is an amazing and culturally enriching tradition. This event not only promotes diversity and cultural understanding but also creates a sense of unity and community within the school.

The event provides a unique opportunity for students from diverse cultural backgrounds to share their culinary traditions with the school community. It's a platform for cultural exchange, where students can learn about and appreciate the food and customs of their peers from different countries.

Activities

International students enjoy both the opportunity to take Outdoor Education and practical subjects such as art, photography, mechanical engineering, materials technology and hospitality, which is different from what they're used to.

International students participate in a range of exciting extra-curricular events and excursions as part of their New Zealand experience. Trips and events that have been enjoyed over the years are:

- Surfing at Whangamata
- Fishing in the Coromandel
- Zip-lining in the Coromandel
- Skiing
- Parliament school excursion to the capital city Wellington
- Zorb rides in Rotorua
- Visits to Hobbiton
- Kayaking

Support

The teachers and students create a warm and welcoming environment that leaves our guests with lasting memories.

The homestay families that we select are nurturing and treat the students as part of their families.

Our volunteer buddies play a vital role in ensuring these students feel warmly welcomed and supported, and we receive consistent feedback:

“They don't want to leave.”

Kia ora,
As the International Student Manager at Thames High School, I am responsible for the well-being and happiness of our international students to ensure their positive experiences. I support their pastoral needs by ensuring their health, safety, and emotional well-being while away from home - I act as a supportive liaison between them, their families, and teachers. My aim is to integrate international students smoothly into the school community, ensuring their academic and social success.



PAULINE MANAGH
INTERNATIONAL PROGRAMME MANAGER

international@thameshigh.school.nz

JACK
MCLEAN
COMMUNITY
RECREATION
CENTRE

JACK
MCLEAN
COMMUNITY
RECREATION
CENTRE

SPORTS 



“Sport is the quickest and easiest way to make friends and integrate into school life - and learn English!”

Thames High School offers over 30 sporting codes. The school's sports facilities include playing fields, a swimming pool and a state-of-the-art sporting complex. The rock climbing wall, school kayaks and fitness equipment are well-used. Students also have access to the town's facilities such as the tennis and squash courts, pony club, golf club and aviation school.

Participation in sports encourages physical activity, promoting fitness and overall well-being among students. It instils healthy habits that can last a lifetime.

Student-athletes often take on leadership roles within their teams. They learn to lead by example, make decisions under pressure, and inspire their teammates.

- Athletics
- Archery
- Badminton
- Basketball
- Cricket
- Cycling
- Cross Country Running
- Equestrian
- Football
- Golf
- Hockey
- Netball
- Rock Climbing
- Rugby
- Rugby League
- Softball
- Swimming
- Squash
- Tennis
- Touch Rugby
- Volleyball



 ARTS/CLUBS/MUSIC

- Art
- Aviation
- Camping
- Chess
- Creative Writing
- Debating
- Design
- Drama
- Kapa Haka
- Library
- Music
- Singing Group
- Spelling Bee
- Thames High Troupe
- Volunteer Army

Thames High School prides itself on a rich and vibrant cultural life.

Music

The Music Department offers lessons in an extensive range of instruments as part of its instrumental tuition programme including trumpet, trombone, tuba, alto and tenor saxophones and clarinet, piano, electric keyboard, drums, voice training and acoustic, electric, bass guitars, flute, cello, and double bass. A harpsichord was donated to the department, which will have several different applications within the department.

Drama

The Drama Department is very active. The class room boasts state of the art lighting and stage fittings and is situated in the original school building built in 1880.

Thames High Troupe is a street performance group that performs at festivals.

Kapa Haka

There is a Māori Cultural Group which is called Te Rōpū Kapa Haka Te Puna o Te Pita Mata. The group practises each week and performs on important occasions for the school. Kapa Haka is an important part of the school curriculum.



Music Recital



Kapahaka group

HOMESTAYS

Aetted and approved by the International Student Department. Careful consideration is taken before placing a student and we try and match to interests and hobbies.

Our international students are welcomed into that family as fully functioning members and are guaranteed a single private bedroom, with a comfortable bed, storage and a desk.

Homestay families can be chosen from town, outlying areas, beach or farm locations, depending on your interests and needs. Most homestay families are located in the township of Thames, so school and amenities are within easy walking distance.

If placed on a farm or along the coast, there is a free school bus each day to transport the students to and from Thames.

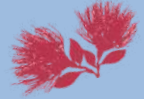
Throughout the stay, all aspects of accommodation are closely monitored and support staff and procedures are in place should the student need assistance.

“The highlight of my time in Thames was when my host family took me out on the boat & we sailed around the Coromandel & went diving!”



Eric Langeneckertl
Germany





Code of Practice for the Pastoral Care of International Students

Thames High School is a signatory to the Education (Pastoral Care of International Students) Code of Practice 2021, overseen by the New Zealand Government. Details are on the website of the New Zealand Qualifications Authority www.nzqa.govt.nz/providers-partners/caring-for-international-students

Wellbeing

International student wellbeing is supervised by the international department staff. Thames High School considers students' well-being to be of paramount importance. While academic success is important, high-achieving students understand the importance of a balanced lifestyle. They engage in extracurricular activities, maintain social connections, and prioritise their mental and physical well-being and here at Thames High School, we encourage this. The school is close to Thames Hospital and has a registered school nurse on site.

Additional Student Support

- An orientation programme and continued support
- Full Medical and Travel Insurance can be arranged by the school
- 24-hour emergency phone contact
-

Living in Thames

The town itself boasts a rich cultural heritage with numerous organisations for residents to get involved in. There's a vibrant Musical Theatre Group that stages one major production each year, alongside smaller plays, and the Thames Concert Band plays an active role in community life. Art groups are quite popular, and there are many other clubs catering to various interests, from dancing to scouting and karate.

The town is also home to plenty of restaurants and cafes, as well as numerous second-hand shops. The newly upgraded playground provides entertainment for teenagers, featuring a basketball court and a skate park. In 2024, Thames celebrated the return of a cinema, which showcases arthouse and international films.

Just a ten-minute drive up the coast, you'll find beautiful beaches, and the nearby bush offers many swimming holes that locals enjoy during the summer.



A Brief History of the School and Thames.

Thames High School / Te Kura Tuarua o Te Kauaeranga, was founded in 1880 and the land on which it sits was gifted by the local Māori iwi/tribe called Ngāti Maru. The school is the second oldest secondary school in the Auckland province.

Thames has a rich history tied to the mana whenua / land of Hauraki, the gold rush (1867-1871), and Kauri logging. Ngāti Maru, part of the Marutūahu confederation, has been settled in the area since around 1550. Thames, with a population of approximately 7,500, is the largest town on the Coromandel Peninsula and serves as a key hub for local governance, healthcare, retail, and tourism.

The school's strategic intents are:

- We will give effect to Te Tiriti o Waitangi.*
- We will support all taiohi / young people to reach their potential.
- We will value everyone, so they are safe and acknowledged for who they are.

Our commitment to Te Tiriti o Waitangi

Thames High School / Te Kura Tuarua o Te Kauaeranga is committed to working in partnership with whānau, hapu, iwi and our community.

The principles of partnership, participation and protection underpin all relationships. We are committed to working with Ngāti Maru iwi. The kawenata (agreement) signifies a positive collaboration to ensure all educational success. The school has a commitment to equity and diversity that actively promotes full bicultural and multi-ethnicity understanding for our students.

Our Vision

Kia kōtahi ai te piki aki, kia ikeike rawa ki te taumata
We grow together to achieve one's true potential.

Our Mission

Kia mahana o neherā Acknowledge our past
Kia aratakina āianeī Inspire our present
Hei waihanga ā mua Transform our future world

Our Values / Tikanga

Whakamana We build each other up, supporting identity & enhancing mana.
Mātautanga We deepen our knowledge of understanding to empower learning.
Manaakitanga Everyone belongs, everyone matters, and everyone has potential.
Whakapono We are honest and show integrity in all we do.
Whanaungatanga We build connected & collaborative relationships that acknowledge & embrace our community

*Te Tiriti o Waitangi (known in English as the Treaty of Waitangi), is an agreement made in 1840 between representatives of the British Crown and (ultimately) more than 500 rangatira Māori.



This chart outlines the subject progression for each learning area based on Year Level. Courses that are 'compulsory' are in **bold** and indicate that all taiohi/students in that year level will be allocated a class in that learning area for the full year.

*Core subjects (Compulsory) Term Rotation
(DL) Distance Learning

	YEAR 9	YEAR 10	YEAR 11 - NCEA L1	YEAR 12 - NCEA L2	YEAR 13 - NCEA L3
VISUAL & PERFORMING ARTS	Art*	Art*	Art Visual Art Design	Art Photography Visual Art Design	Art Photography Visual Art Design
	Drama*	Drama*	Drama	Drama	Drama
	Music*	Music*	Music	Music	Music
ENGLISH	English English as Second Language (ESL)	English ESL	English ESL	English Communications ESL	English Communications ESL
SOCIAL SCIENCES	Social Studies	Social Studies	Geography History	Geography History Tourism (DL)	Geography History Tourism (DL)
COMMERCE	Enterprise*	Enterprise*	Commerce (DL)	Accounting (DL) Business (DL) Economics (DL) Psychology (DL)	Accounting (DL) Business (DL) Economics (DL) Psychology (DL)
TE AO MĀORI	Te Reo Māori Te Ao Haka	Te Reo Māori* Te Ao Haka*	Te Reo Māori Te Ao Haka	Te Reo Māori Te Ao Haka	Te Reo Māori Te Ao Haka
LANGUAGE (DISTANCE LEARNING)	French Spanish Japanese German	French Spanish Japanese German	French Spanish Japanese German	French Spanish Japanese German	French Spanish Japanese German
MATHEMATICS	Mathematics	Mathematics	Mathematics	Mathematics Statistics	Calculus Statistics
PHYSICAL EDUCATION & HEALTH	Physical Education & Health	Physical Education & Health	Physical Education Outdoor Education Health Hauora	Physical Education Outdoor Education Health	Physical Education Outdoor Education Health
	Active As*	Active As*			
SCIENCE	Science	Science	Science OR Horticulture	Physics Chemistry Biology Horticulture	Physics Chemistry Biology Horticulture General Science
DISTANCE LEARNING (DL)	Languages as above	Languages as above	Subjects include languages, Tourism and Early Childhood Education plus more	Subjects include languages, Tourism and Early Childhood Education plus more	Subjects include languages, Tourism and Early Childhood Education plus more
VOCATIONAL PATHWAYS			Work Skills	Gateway Wintec Trades	Gateway Wintec Trades
TECHNOLOGY	Kai / Food Tech* Multi Materials Tech* Fabric Design*	Kai / Food Tech* Multi Materials Tech* Fabric Design*	Mechanical Engineering Furniture Making Fabric & Design Food and Hospitality	Mechanical Engineering Furniture Making Fabric & Design Food and Hospitality	Mechanical Engineering Furniture Making Fabric & Design Food and Hospitality
	Digital Technology*	Digital Technology	Digital Technology Digital Applications	Digital Technology Digital Applications	Digital Technology Digital Programming (DL) Gaming Design (DL)



WHY CHOOSE US



Amazing Location

Thames High School is situated in a picturesque part of New Zealand which is close to the most beautiful beaches and native national parks in New Zealand.



Academic Excellence

Students at Thames High School achieve outstanding academic results, preparing them well for tertiary education.



Choice & Flexibility

Students can choose from a large list of academic and vocational subjects. Extension classes are available for top students and ESOL classes support students with lower levels of English.



Support & Integration

Students receive a high level of support provided by experienced international staff and carefully selected host families. A supportive host family, teachers, and peers can play a significant role in fostering academic excellence. Students thrive when they have a network of people who encourage and assist them in their educational journey and here at Thames High School we make it our priority to ensure this is the case for your child.



Thames High School
Te Kura Tuarua o Te Kauaeranga
NEW ZEALAND

Phone: +64 7 868 8688

Email: international@thameshigh.school.nz

Address: 300 Sealey Street, Thames 3500, Coromandel Peninsula, New Zealand

Post: P.O. Box 706, Thames 3540, New Zealand

www.international.thameshigh.school.nz

